

APPLICATION: Low Voltage Large Current Drivers.

MAXIMUM RATINGS (Ta=25°C)

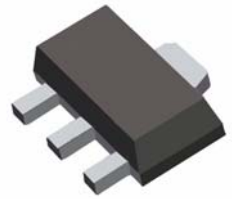
PARAMETER	SYMBOL	RATING	UNIT
Collector-base voltage	VCBO	-40	V
Collector-emitter voltage	VCEO	-30	V
Emitter-base voltage	VEBO	-5	V
Collector current	Ic	-3	A
Collector Power Dissipation	Pc	1	W
Junction Temperature	Tj	150	°C
Storage Temperature Range	Tstg	-55-150	°C

SOT-89

1. OUT

2. GND

3. IN



ELECTRICAL CHARACTERISTICS (Ta=25°C)

PARAMETER	SYMBOL	MIN.	TYP.	MAX.	UNIT	TEST CONDITION
Collector-Base Breakdown Voltage	BVcbo	-40			V	Ic=-1 mA Ie=0
Collector-Emitter Breakdown Voltage	BVceo	-30			V	Ic=-10 mA Ib=0
Emitter-Base Breakdown Voltage	BVebo	-5			V	Ie=-1 mA Ic=0
Collector Cut-off Current	Icbo			-0.1	uA	Vcb=-30 V Ie=0
Emitter Cut-off Current	Iebo			-0.1	uA	Veb=-3 V Ic=0
Collector-Emitter Saturation Voltage	Vce(sat)			-0.5	V	Ic=-2A Ib=-0.2A
Base-Emitter Saturation Voltage	Vbe(sat)			-2	V	Ic=-2A Ib=-0.2A
DC Current Gain	H _{FE}	60		400	β	Vce=-2 V Ic=-1A
Gain bandwidth product	fT	50	80		MHz	Vce=-5 V Ic=-100mA
Common Base Output Capacitance	Cob		55		pF	Vcb=-10 V Ie=0 f=1MHz
Noise Figure	NF				dB	

H_{FE} Classification And Marking

Print Mark

Classification

R

Q

P

E

H_{FE}

60-120

100-200

160-320

200-400